



Avantgarde Place, London, E1

BUTLER & STAG



Stunning fifteenth floor apartment set within the iconic Avantgarde Building in Shoreditch, city dwelling at its best with everything on the doorstep.



- Fifteenth Floor Apartment
- 24 Hour Concierge
- Residents Lounge
- Heart of The City
- Private Winter Garden Balcony
- On-Site Gymnasium
- Communal Roof Terrace
- Close to Transport

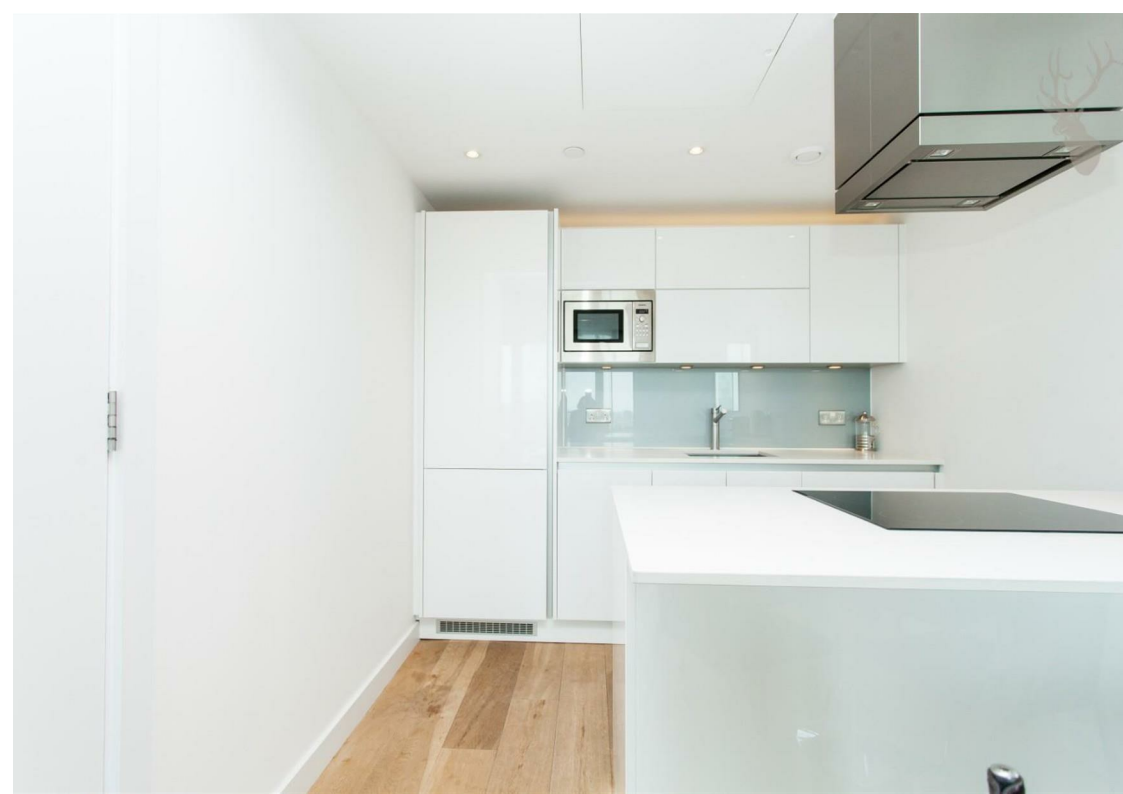
Measuring approximately 527 sq. ft. the property boasts a high specification finish throughout and comprises a large and bright open plan kitchen/reception opening to a winter garden style private balcony with far reaching views across the London skyline. Further comprising a generous double bedroom with fitted wardrobes, contemporary bathroom and useful storage space.

Residents of Avantgarde tower also benefit from a 24 hour concierge, residents lounge, on-site gymnasium and communal roof terrace.

The property is located in zone 1, just yards from Shoreditch High Street Overground and easy walking distance to the City's Square Mile, Liverpool Street Station, Aldgate and Whitechapel Station. The vibrant and local hot spots of Shoreditch, Brick Lane and Spitalfields Market are also very close by, making this an ideal location.

Available 28th March

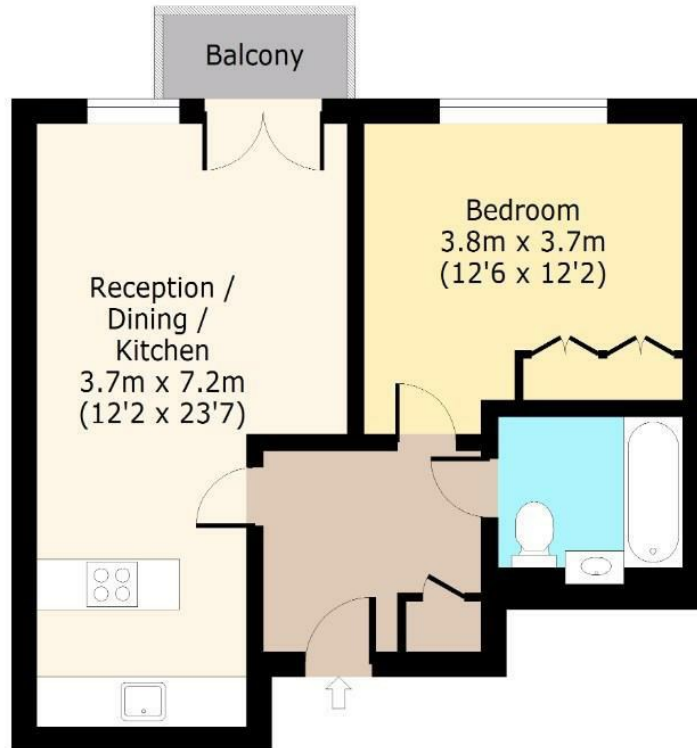




Avantgarde Place, E1

Fifteenth Floor

Approx. 49 Sq. meters (527 Sq. feet)



Total area: approx. 49 Sq. meters (527 Sq. feet)

For illustration purposes only - not to scale

www.lpaplus.com

BUTLER & STAG

☎ 020 8102 1236

🏠 508 Roman Road, Bow, London, E3 5LU

✉ bow@butlerandstag.com

www.butlerandstag.uk

IMPORTANT NOTICE - These particulars have been prepared in good faith and they are not intended to constitute part of an offer or contract. We have not performed a structural survey on this property and the services, appliances and specific fittings have not been tested. All photographs, measurements, floor plans and distances referred to are given as a guide and should not be relied upon.